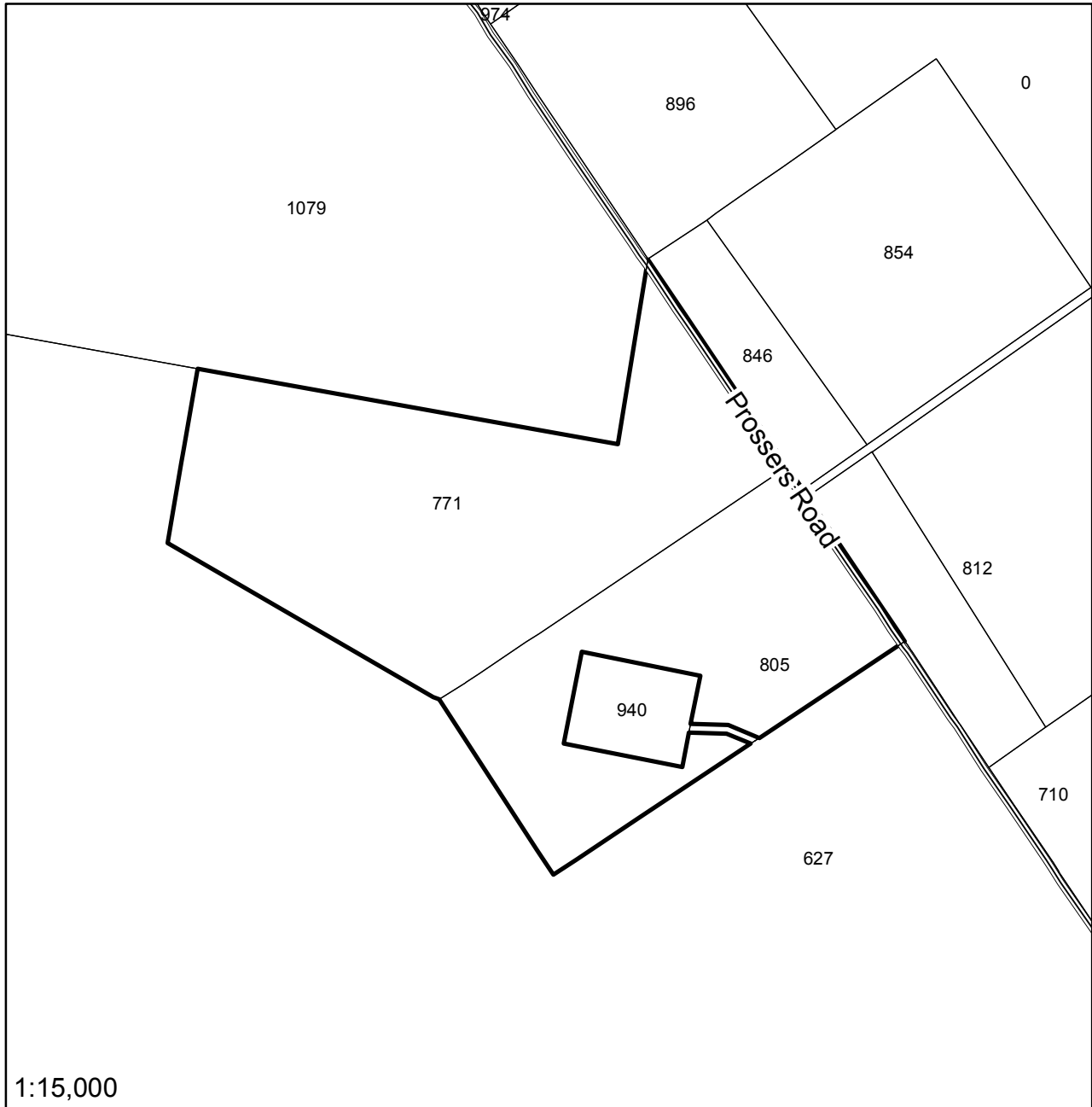


Launceston Interim Planning Scheme 2015

AMENDMENT 20

Amend the interim planning scheme maps as below:

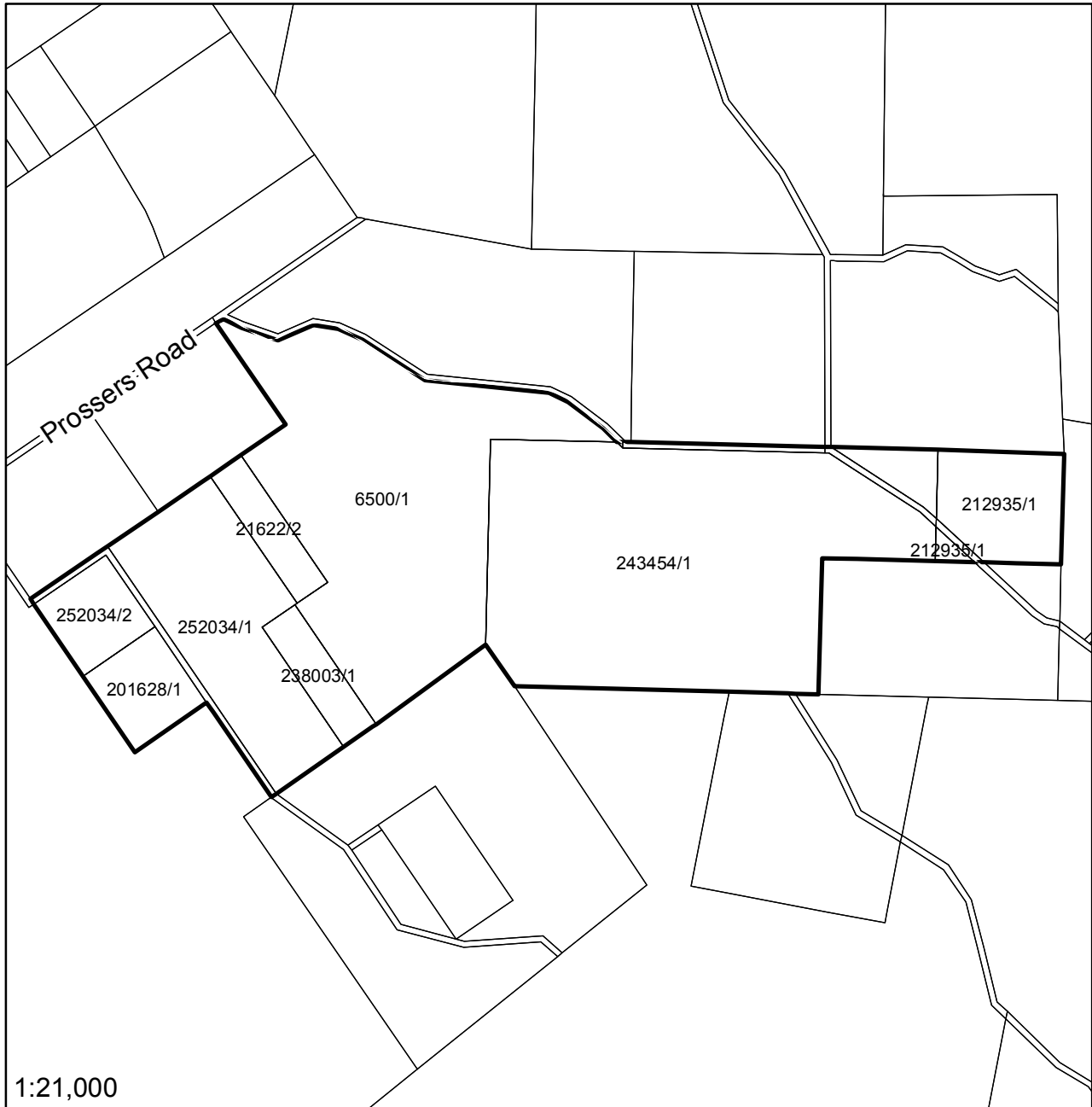


SAP 8 - Forestry Area to be removed from outlined area
(titles 246868/1, 246635/1)

Launceston Interim Planning Scheme 2015

AMENDMENT 20

Amend the interim planning scheme maps as below:

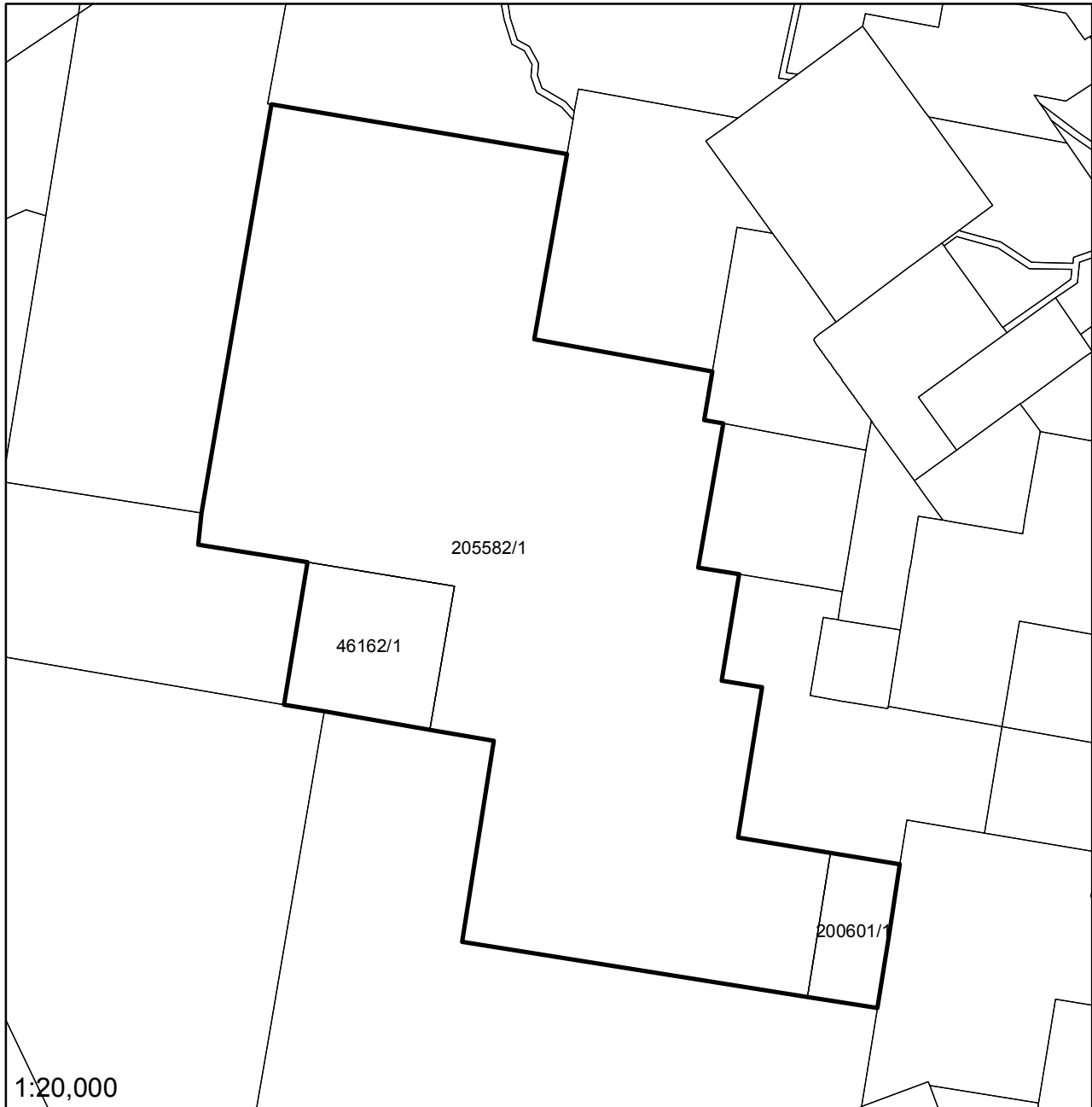


SAP 8 - Forestry Area to be removed from outlined area
(titles 201628/1, 252034/2, 252034/1, 21622/2, 238003/1, 6500/1, 243454/1, 212935/1)
39410 Tasman Highway Nunamara

Launceston Interim Planning Scheme 2015

AMENDMENT 20

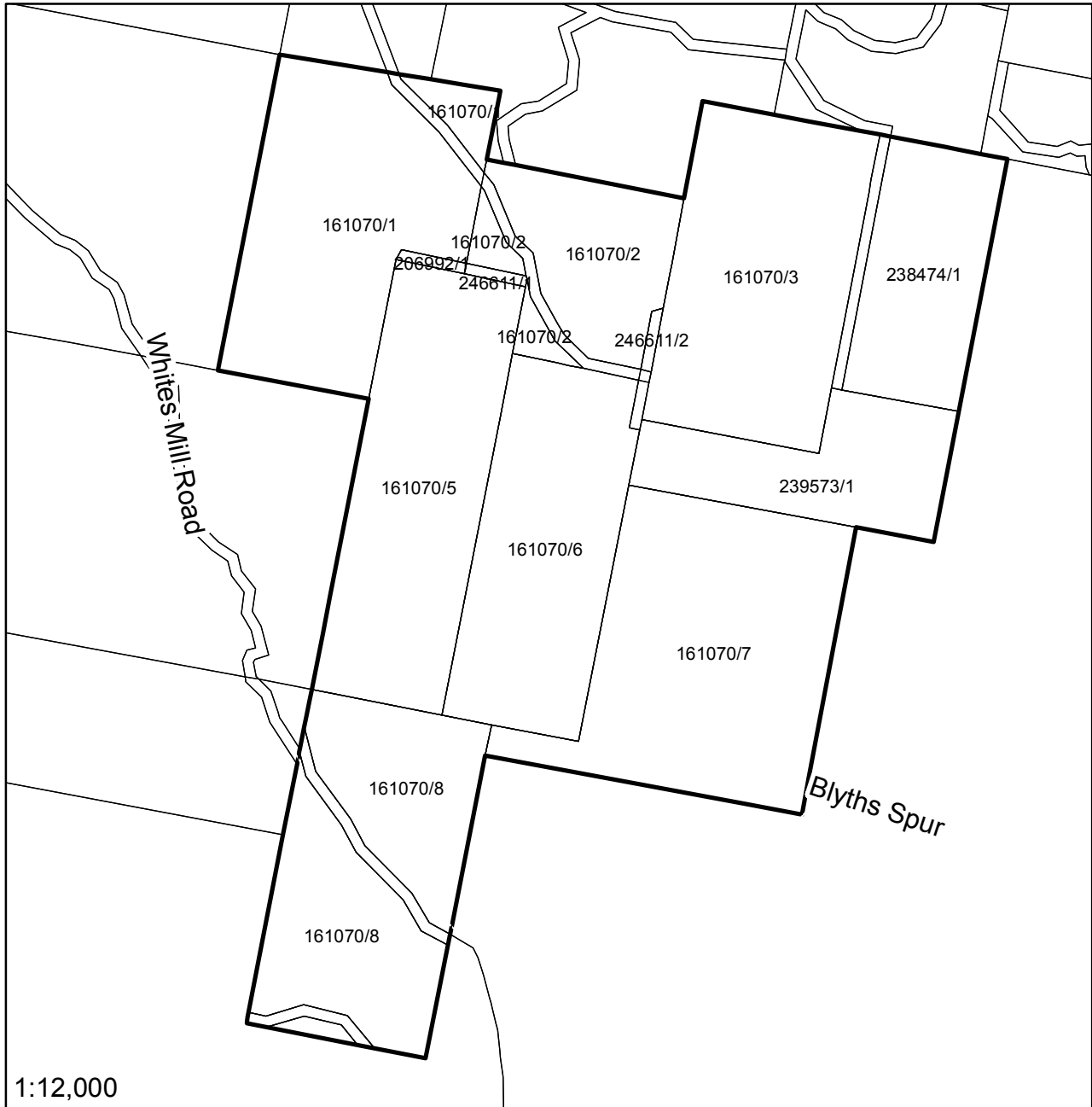
Amend the interim planning scheme maps as below:



SAP 8 - Forestry Area to be removed from outlined area
(titles 205582/1, 46162/1, 200601/1)
90 Arnolds Road Karoola

Launceston Interim Planning Scheme 2015 AMENDMENT 20

Amend the interim planning scheme maps as below:

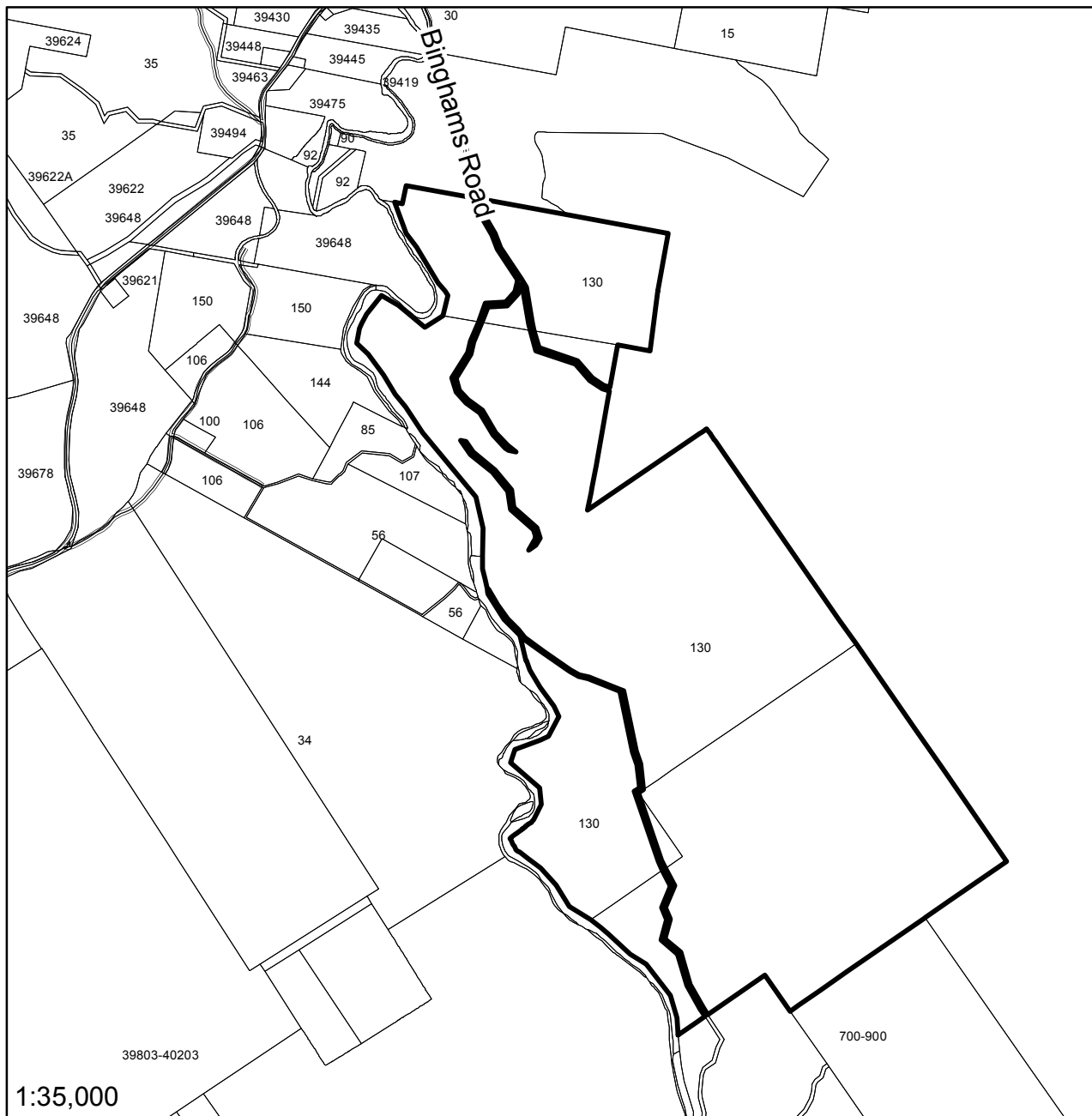


SAP 8 - Forestry Area to be removed from outlined area
(titles 161070/1, 161070/5, 161070/8, 161070/2, 161070/3, 238474/1, 239573/1, 161070/7, 161070/6,
206992/1, 246611/1, 246611/2)

Launceston Interim Planning Scheme 2015

AMENDMENT 20

Amend the interim planning scheme maps as below:



SAP 8 - Forestry Area to be removed from outlined area
(Titles 54350/1, 217991/1, 217992/1)