

**TURNER, William Johnston**



Service no 1045  
L Sergeant  
12th Battalion 'E' Coy.

**b**

William Turner was born in Lilydale, Tasmania on 3rd. Oct. 1890. He was one of 4 sons & 2 daughters born to Nicol & Isabella Turner. The family ran a large orchard called 'Birkenside'. As he grew, William developed a great thirst for adventure & was known around the Lilydale area as a 'bit of a Romeo'!

William was very keen to 'do his bit' and enlisted in the AIF on 16th. Sept. 1914, aged 23years & 11mths. He embarked from Hobart on the Transport A2 'Geelong' on 20th. Oct. 1914 for Alexandria. His unit left Alexandria on the 'Devanha' on 2nd March 1915 bound for Gallipoli. William spent the next several months in the mud & horror of Gallipoli. He served well in the field, in between admissions to hospital with influenza & dysentery. A Capt. Rafferty reported that William "Did good work at Gallipoli, especially in the forward trenches." On 1st. December 1915 at Mudros he was promoted to Corporal.

On 6th. January 1916, William's unit left Alexandria on the H.T.'Lake Michigan' and landed in Marseilles on 5th April 1916. They then headed to the Somme where William was promoted to Lance Sergeant on the 26th May.

Sadly, William was killed at Pozieres on 25th July 1916, aged 27 years. He has no known grave. He is remembered at the Villers-Bretonneux Memorial.

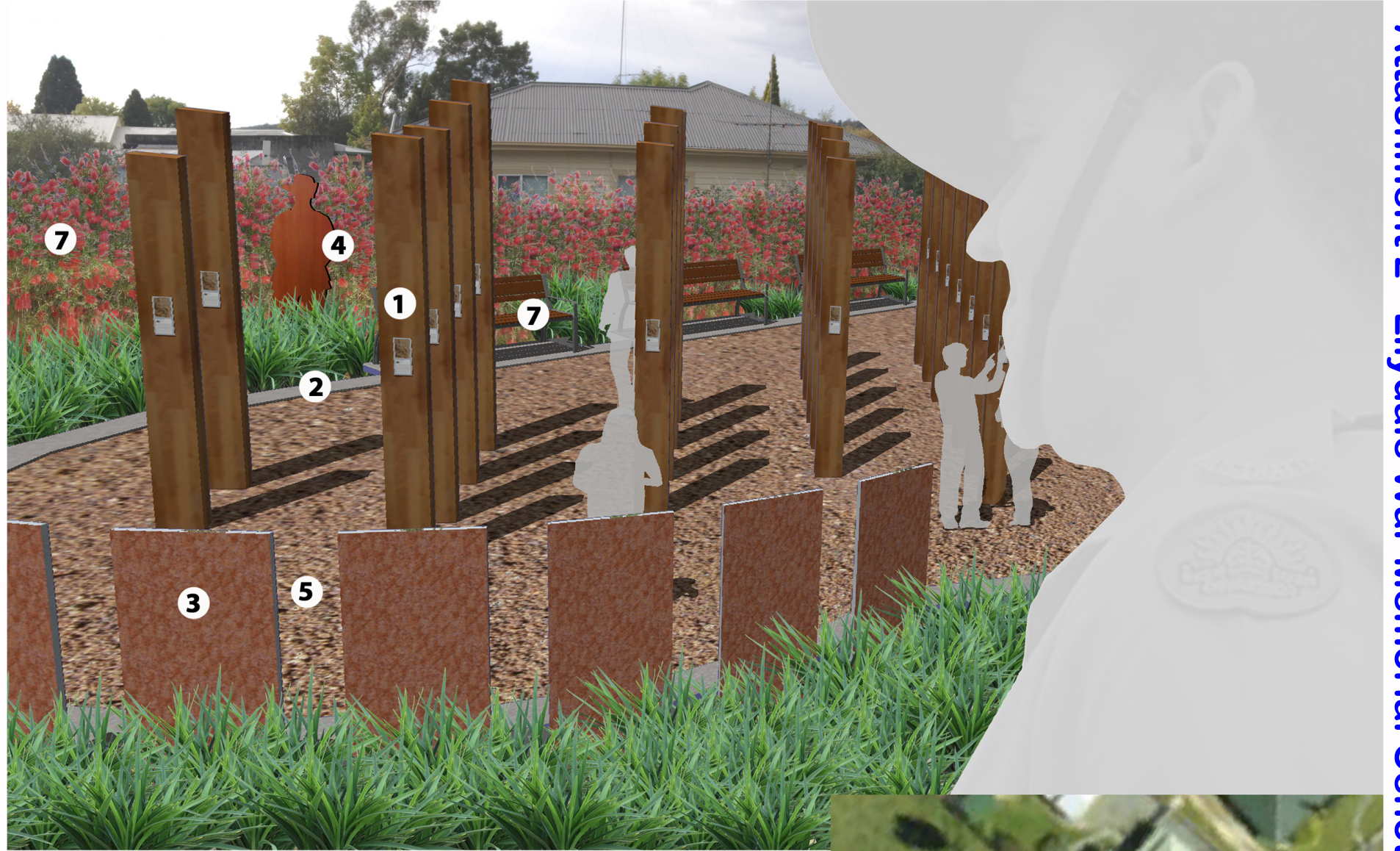


**a**

Courtesy of Anne Betts <http://www1tas.gravesecrets.net/t.html>

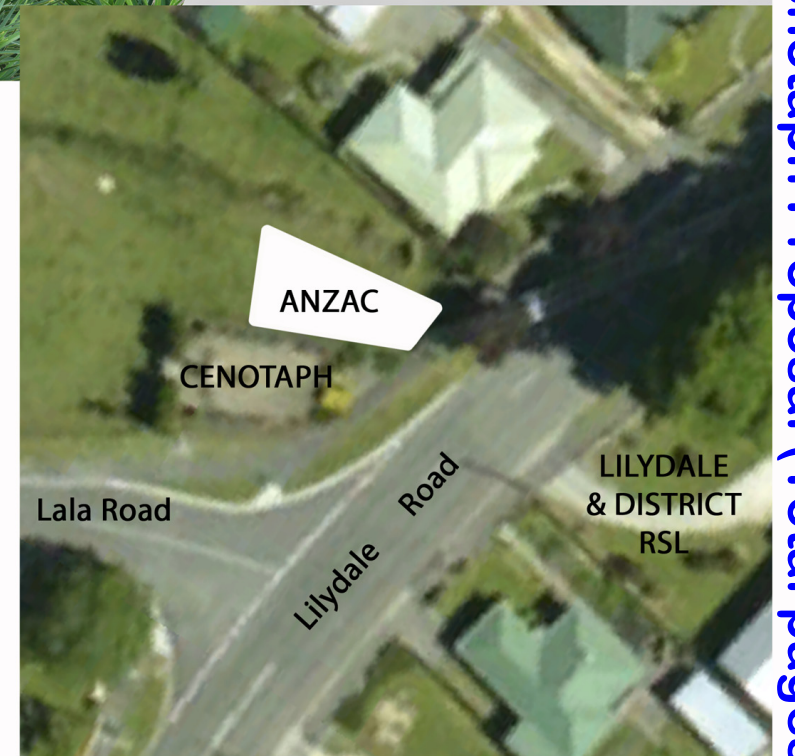
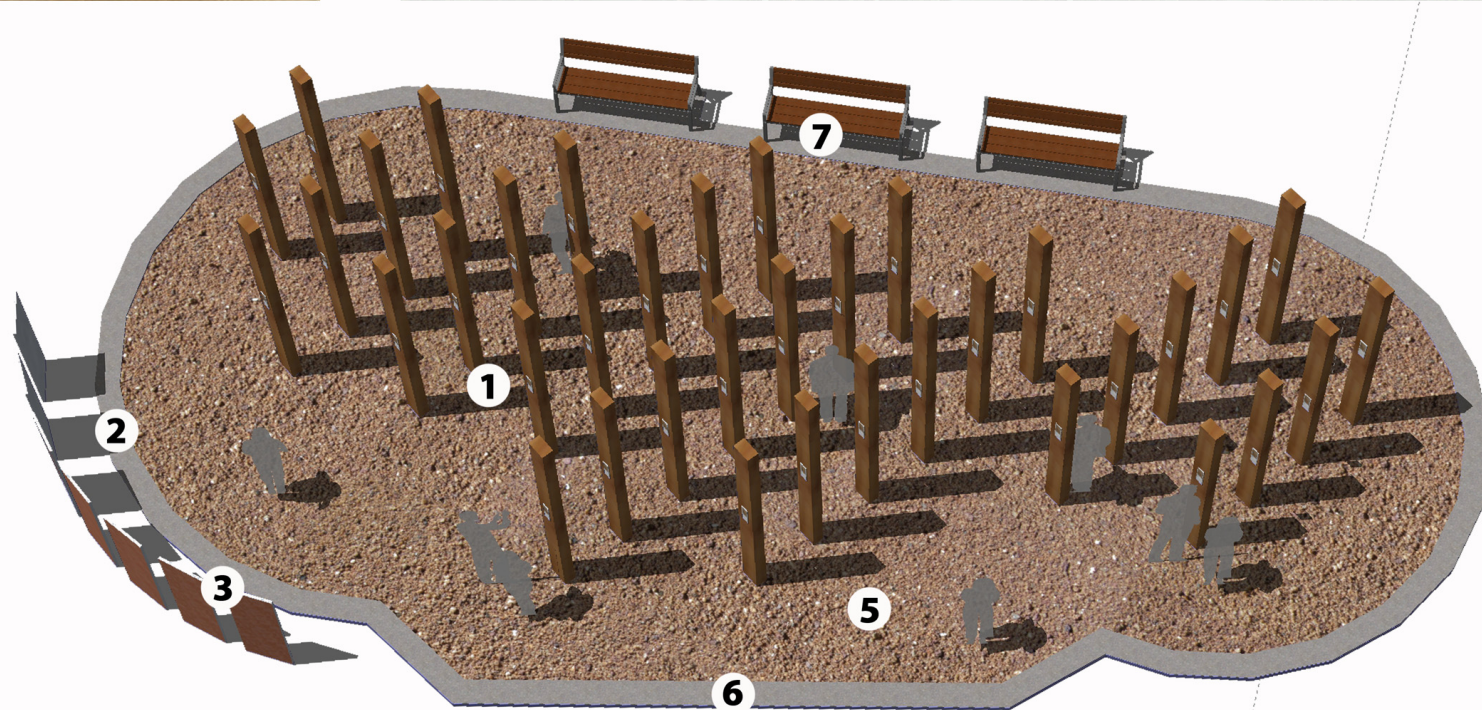


**c**



**LEGEND**

- 1 Columns facing the Cenotaph and set out in parade formation, depicting each soldier who sacrificed their life in the war. The columns will have an image of the soldier (a), a brief history of their life before the war and then details of their life in the war (b).
- 2 300mm (w) Concrete edge with WW1 artifacts (c) embedded into clear resin portholes to provide further attachment to those who fought for Australia.
- 3 Upright interpretive signage panels with anodised aluminium panel fronts illustrating the story of the men and women of Lilydale that were involved in WW1 and how the war affected the community.
- 4 Lone silhouette of WW1 Digger set within the garden as a sentinel for the fallen soldiers.
- 5 Compacted decomposed granite pavement.
- 6 Connection through to adjoining cenotaph.
- 7 Comfortable park seating for contemplation and remembrance.
- 8 Screen and foreground planting consisting of local species.



**Lilydale WW1 Memorial Proposal**

**Landscape Sketch Concept**

main street      lilydale      tasmania

28 March 2015

LILYDALE (TAS)  
Sub Branch of the  
Returned & Services League  
Of Australia

